

Hamburg and Bremen Shipbrokers' Association (VHBS)

New ConTex Container Ship Time Charter Assessment Index

New ConTex*		402	
09.05.19		12 mos	24 mos
Gearless	1100 TEU	\$6.620	n.a.
	1700 TEU	\$8.347	
	2500 TEU	\$9.095	\$10.029
	2700 TEU	\$9.049	\$10.072
	3500 TEU	\$8.795	\$9.802
	4250 TEU	\$9.131	\$10.092

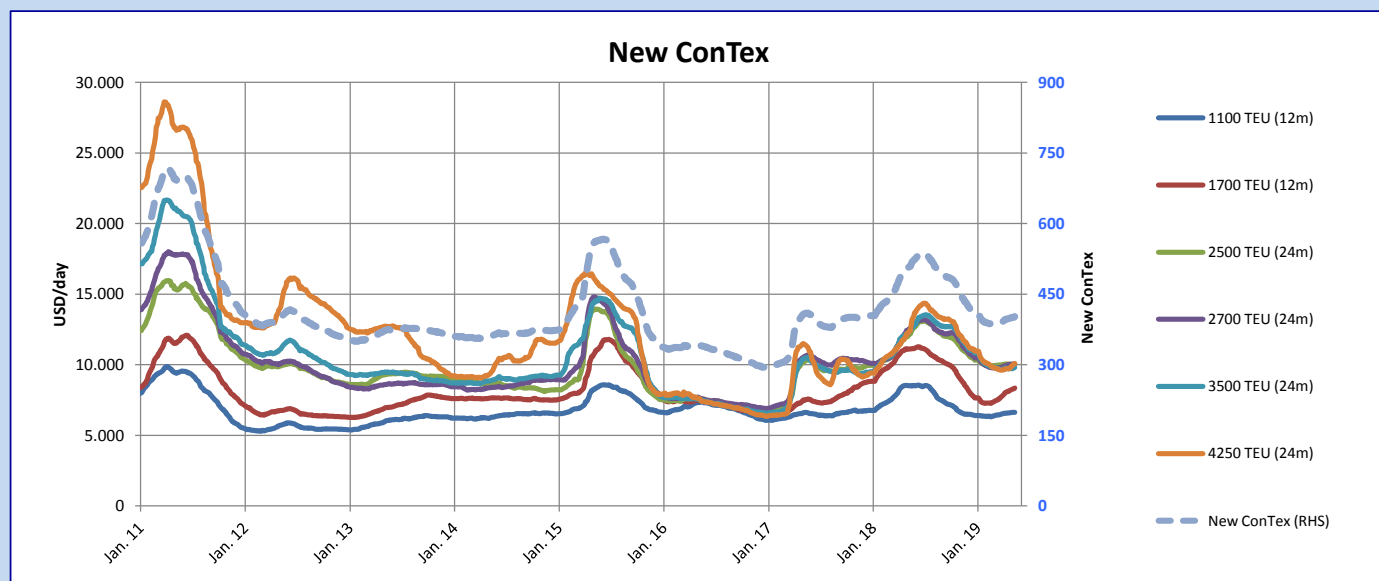
Legend		
↑	up	+ 2% or more
↔	steady up	from +1% to +1,9%
→	steady	+/- 1 %
↔	steady down	from -1% to -1,9%
↓	down	- 2% or less

*New ConTex evaluation is EXCLUDING
2500/2700/3500/4250 TEU groups for
12 months period

New ConTex-Commentary - issued:	09.05.19
<p>The New ConTex is again, in the same way as one week before, improving by just about 0,2 pct or 1 single point up to now 402 in total. Same is been driven by the larger panamax vessels of 4250 teu which increased by 0,9 pct or 4,3 pct month-on-month and the 1700 teu vessels which increased by 0,7 pct or 3,6 pct month-on-month both basis 12 month charter.</p> <p>All other segments remain more or less at the same level as one week before.</p> <p>The sentiment and market activities however keep positiv with more tonnage disappearing this week enabling Owners to obtain further slightly improved rates and also longer charter periods.</p>	

New ConTex Development

Vessel type	Evaluated Period	Today	Week-on-Week				Month-on-Month			Year-on-Year				
			09.05.19	02.05.19	Change	Change	09.04.19	Change	Change	08.05.18	Change	Change		
New ConTex*		402	401	1	→	0,2%	397	5	↔	1,3%	509	-107	-21,0%	
New ConTex	12 mos	1100 TEU	\$6.620	\$6.633	-\$13	→	-0,2%	\$6.561	\$59	↔	0,9%	\$8.510	-1.890	-22,2%
		1700 TEU	\$8.347	\$8.290	\$57	→	0,7%	\$8.058	\$289	↑	3,6%	\$11.107	-2.760	-24,8%
		2500 TEU	\$10.029	\$10.038	-\$9	→	-0,1%	\$10.049	-\$20	↔	-0,2%	\$12.172	-2.143	-17,6%
	24 mos	2700 TEU	\$10.072	\$10.040	\$32	→	0,3%	\$9.960	\$112	↔	1,1%	\$12.537	-2.465	-19,7%
		3500 TEU	\$9.802	\$9.742	\$60	→	0,6%	\$9.773	\$29	↔	0,3%	\$12.429	-2.627	-21,1%
		4250 TEU	\$10.092	\$9.979	\$113	↔	1,1%	\$9.692	\$400	↑	4,1%	\$12.438	-2.346	-18,9%
12 mos	2500 TEU	\$9.095	\$9.129	-\$34	→	-0,4%	\$9.169	-\$74	↔	-0,8%	\$11.299	-2.204	-19,5%	
	2700 TEU	\$9.049	\$9.081	-\$32	→	-0,4%	\$8.987	\$62	↔	0,7%	\$11.537	-2.488	-21,6%	
	3500 TEU	\$8.795	\$8.754	\$41	→	0,5%	\$8.748	\$47	↔	0,5%	\$11.368	-2.573	-22,6%	
	4250 TEU	\$9.131	\$9.050	\$81	→	0,9%	\$8.758	\$373	↑	4,3%	\$11.307	-2.176	-19,2%	



Disclaimer

The brand NewConTex is copyrighted by Verband Hamburger und Bremer Schiffsmakler e.V. ("VHBS e.V.") and is protected by law. The NewConTex may be published only with the source reference © VHBS e.V. It is distributed to the general public for information purposes only and cannot be relied upon as a trading recommendation and does not constitute a solicitation to trade. The reported information is obtained from market sources. While every effort has been made to ensure the accuracy and the completeness of the NewConTex, VHBS e.V. makes no representations, conditions or warranties of any kind, express or implied, about the completeness, accuracy, reliability, or suitability of the NewConTex. Any reliance you place on the NewConTex is therefore strictly at your own risk. Neither VHBS e.V. nor any of its subsidiaries or affiliates nor any employee of the foregoing shall be liable or have any responsibility for any loss, liability or damage, cost or expense including without limitation, indirect or consequential loss or damage, or any loss or damage whatsoever arising from loss of data or profits arising out of, or in connection with, the use of and the reliance on the NewConTex, save for death or personal injury arising from VHBS e.V. negligence and fraudulent misrepresentation that cannot, under German law, be excluded.