



## New ConTex Container Ship Time Charter Assessment Index

New ConTex*		297	
01.12.16		12 mos	24 mos
G geared	1100 TEU	\$6.146	n.a.
	1700 TEU	\$6.508	
	2500 TEU	\$5.592	\$6.633
Gearless	2700 TEU	\$5.998	\$6.948
	3500 TEU	\$5.361	\$6.620
	4250 TEU	\$4.233	\$6.448

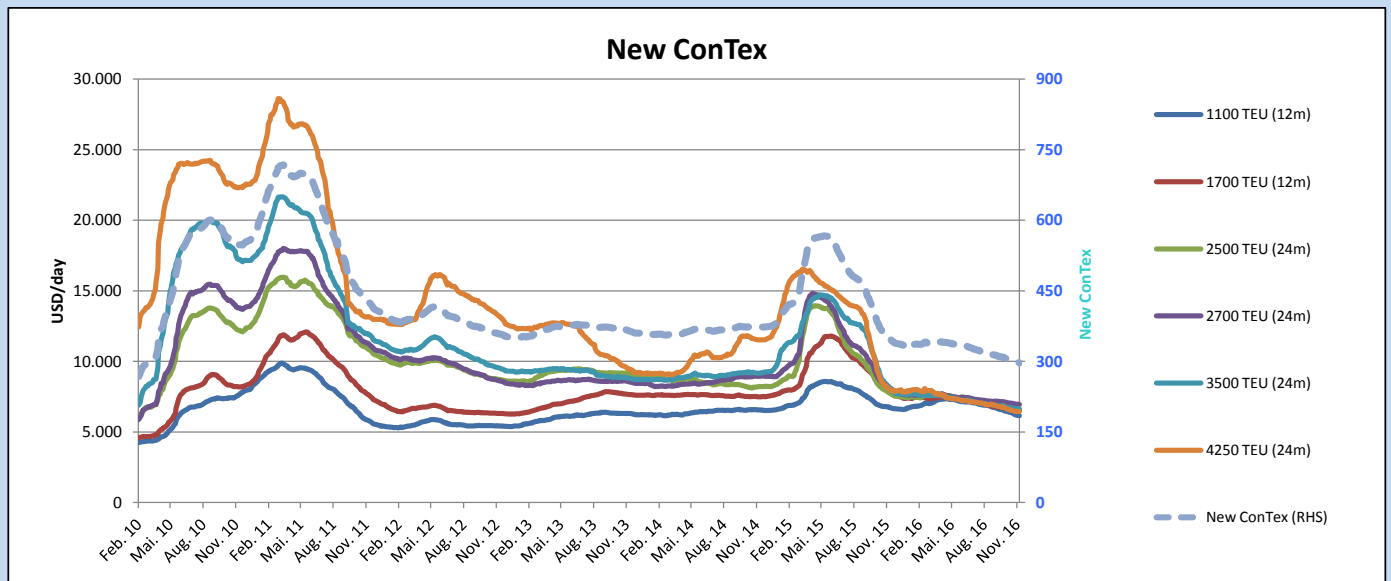
Legend		
↑	up	+ 2% or more
↔	steady up	from +1% to +1,9%
↔	steady	+/- 1%
↔	steady down	from -1% to -1,9%
↓	down	- 2% or less

\*New ConTex evaluation is EXCLUDING  
2500/2700/3500/4250 TEU groups for  
12 months period

New ConTex-Commentary - issued:	01.12.16
<p>The New ConTex dropped a further point this week and is now down about 15 pct compared to the same time last year. Regretfully the overhang of large idle tonnage is much higher compared to last December.</p> <p>The charter market remains weak in all segments with only limited business opportunities and the majority for shorter periods. Activity in the 4,250 TEU segment has been marginally increasing however without any positive influence on the charter rates.</p> <p>Following a large number of demolitions the index moved slightly upwards for the craned 2,500 TEU segment and the market East of Suez appear short of tonnage with a potential firming in charter rates possible. The gearless 2,700 TEU segment may face a similar scenario whereas new demand is lacking for the feeders between 1,100 and 1,700 TEU.</p>	

### New ConTex Development

Vessel type	Evaluated Period	Today 01.12.16	Week-on-Week		Month-on-Month			Year-on-Year					
			24.11.16	Change	Change	01.11.16	Change	Change	01.12.15	Change	Change		
<b>New ConTex*</b>		<b>297</b>	298	-1	↔	-0,3%	305	-8	-2,6%	351	-54	-15,4%	
New ConTex	12 mos	1100 TEU	\$6.146	\$6.184	-\$38	↔	-0,6%	\$6.436	-\$290	-4,5%	\$6.751	-605	-9,0%
		1700 TEU	\$6.508	\$6.580	-\$72	↔	-1,1%	\$6.688	-\$180	-2,7%	\$7.868	-1.360	-17,3%
		2500 TEU	\$6.633	\$6.638	-\$5	↔	-0,1%	\$6.765	-\$132	-2,0%	\$7.790	-1.157	-14,9%
	24 mos	2700 TEU	\$6.948	\$6.978	-\$30	↔	-0,4%	\$7.062	-\$114	-1,6%	\$8.207	-1.259	-15,3%
		3500 TEU	\$6.620	\$6.642	-\$22	↔	-0,3%	\$6.729	-\$109	-1,6%	\$8.208	-1.588	-19,3%
		4250 TEU	\$6.448	\$6.456	-\$8	↔	-0,1%	\$6.606	-\$158	-2,4%	\$8.086	-1.638	-20,3%
New ConTex	12 mos	2500 TEU	\$5.592	\$5.528	\$64	↔	1,2%	\$5.585	\$7	0,1%	\$6.478	-886	-13,7%
		2700 TEU	\$5.998	\$5.990	\$8	↔	0,1%	\$6.040	-\$42	-0,7%	\$6.924	-926	-13,4%
		3500 TEU	\$5.361	\$5.365	-\$4	↔	-0,1%	\$5.388	-\$27	-0,5%	\$6.533	-1.172	-17,9%
		4250 TEU	\$4.233	\$4.237	-\$4	↔	-0,1%	\$4.379	-\$146	-3,3%	\$6.064	-1.831	-30,2%



Disclaimer

The brand NewConTex is copyrighted by Vereinigung Hamburger Schiffsmakler und Schiffsagenten e. V. ("VHSS e.V.") and is protected by law. The NewConTex may be published only with the source reference © VHSS e.V. It is distributed to the general public for information purposes only and cannot be relied upon as a trading recommendation and does not constitute a solicitation to trade. The reported information is obtained from market sources. While every effort has been made to ensure the accuracy and the completeness of the NewConTex, VHSS e.V. makes no representations, conditions or warranties of any kind, express or implied, about the completeness, accuracy, reliability, or suitability of the NewConTex. Any reliance you place on the NewConTex is therefore strictly at your own risk. Neither VHSS e.V. nor any of its subsidiaries or affiliates nor any employee of the foregoing shall be liable or have any responsibility for any loss, liability or damage, cost or expense including without limitation, indirect or consequential loss or damage, or any loss or damage whatsoever arising from loss of data or profits arising out of, or in connection with, the use of and the reliance on the NewConTex, save for death or personal injury arising from VHSS e.V. negligence and fraudulent misrepresentation that cannot, under German law, be excluded.