



## New ConTex Container Ship Time Charter Assessment Index

New ConTex*		295	
08.12.16		12 mos	24 mos
Gearless	1100 TEU	\$6.122	n.a.
	1700 TEU	\$6.446	
	2500 TEU	\$5.543	
Gearless	2700 TEU	\$5.977	\$6.606
	3500 TEU	\$5.339	\$6.603
	4250 TEU	\$4.182	\$6.414

Legend		
↑	up	+ 2% or more
↗	steady up	from +1% to +1,9%
→	steady	+/- 1 %
↘	steady down	from -1% to -1,9%
↓	down	- 2% or less

\*New ConTex evaluation is EXCLUDING 2500/2700/3500/4250 TEU groups for 12 months period

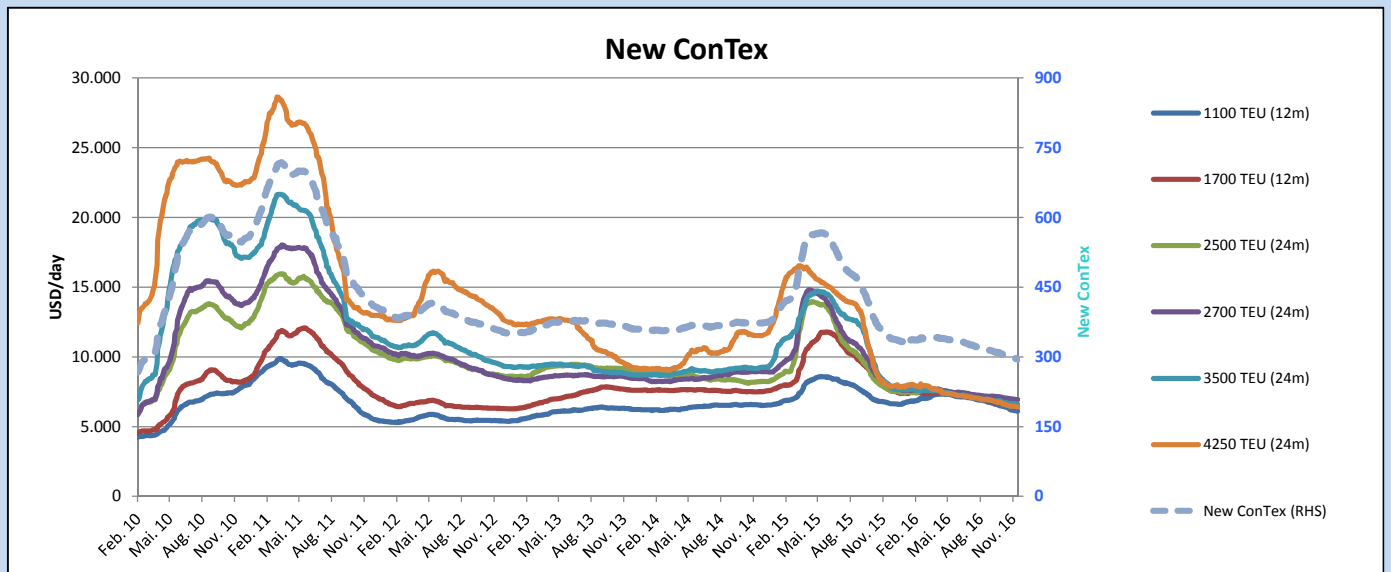
**New ConTex-Commentary - issued: 08.12.16**

Considering the holiday season is approaching, we are pleasantly surprised by the level of activity in the market this week, however, same is not enough to absorb the number of idle ships in the market nor have any effect on rates which are largely moving sideways at the moment.

There are no real noticeable changes in the Asian market this week with rates remaining largely unchanged in all segments. However, further weakness has been noticed in the Mediterranean market this week, especially in the feeder segment (1100 and 1700TEU) where a number of ships remain idle and rates have moved down, even for better specification ships.

Otherwise looking back at one year ago the segment that has suffered the most this year is (unsurprisingly) the Panamax segment (-30pct y-o-y). The segment has seen record scrapping in recent months with a 2009 ship heard to hit the beaches and this must continue in all segments if we are to see any positive rays of sunshine in 2017.

Vessel type		Evaluated Period	Today	Week-on-Week		Month-on-Month			Year-on-Year			
			08.12.16	01.12.16	Change	Change	08.11.16	Change	Change	08.12.15	Change	Change
<b>New ConTex*</b>			<b>295</b>	297	-2	↔ -0,7%	303	-8	-2,6%	345	-50	-14,5%
New ConTex	1100 TEU	12 mos	\$6.122	\$6.146	-\$24	↔ -0,4%	\$6.393	-\$271	-4,2%	\$6.706	-584	-8,7%
	1700 TEU		\$6.446	\$6.508	-\$62	↔ -1,0%	\$6.671	-\$225	-3,4%	\$7.719	-1.273	-16,5%
	2500 TEU		\$6.606	\$6.633	-\$27	↔ -0,4%	\$6.726	-\$120	-1,8%	\$7.693	-1.087	-14,1%
	2700 TEU	24 mos	\$6.931	\$6.948	-\$17	↔ -0,2%	\$7.036	-\$105	-1,5%	\$8.061	-1.130	-14,0%
	3500 TEU		\$6.603	\$6.620	-\$17	↔ -0,3%	\$6.721	-\$118	-1,8%	\$7.963	-1.360	-17,1%
	4250 TEU		\$6.414	\$6.448	-\$34	↔ -0,5%	\$6.537	-\$123	-1,9%	\$7.923	-1.509	-19,0%
New ConTex	2500 TEU	12 mos	\$5.543	\$5.592	-\$49	↔ -0,9%	\$5.547	-\$4	-0,1%	\$6.359	-816	-12,8%
	1700 TEU		\$5.977	\$5.998	-\$21	↔ -0,4%	\$6.018	-\$41	-0,7%	\$6.773	-796	-11,8%
	3500 TEU		\$5.339	\$5.361	-\$22	↔ -0,4%	\$5.356	-\$17	-0,3%	\$6.303	-964	-15,3%
	4250 TEU		\$4.182	\$4.233	-\$51	↔ -1,2%	\$4.332	-\$150	-3,5%	\$5.983	-1.801	-30,1%



**Disclaimer**

The brand NewConTex is copyrighted by Vereinigung Hamburger Schiffsmakler und Schiffsagenten e.V. ("VHSS e.V.") and is protected by law. The NewConTex may be published only with the source reference © VHSS e.V. It is distributed to the general public for information purposes only and cannot be relied upon as a trading recommendation and does not constitute a solicitation to trade. The reported information is obtained from market sources. While every effort has been made to ensure the accuracy and the completeness of the NewConTex, VHSS e.V. makes no representations, conditions or warranties of any kind, express or implied, about the completeness, accuracy, reliability, or suitability of the NewConTex. Any reliance you place on the NewConTex is therefore strictly at your own risk. Neither VHSS e.V. nor any of its subsidiaries or affiliates nor any employee of the foregoing shall be liable or have any responsibility for any loss, liability or damage, cost or expense including without limitation, indirect or consequential loss or damage, or any loss or damage whatsoever arising from loss of data or profits arising out of, or in connection with, the use of and the reliance on the NewConTex, save for death or personal injury arising from VHSS e.V. negligence and fraudulent misrepresentation that cannot, under German law, be excluded.