



## New ConTex Container Ship Time Charter Assessment Index

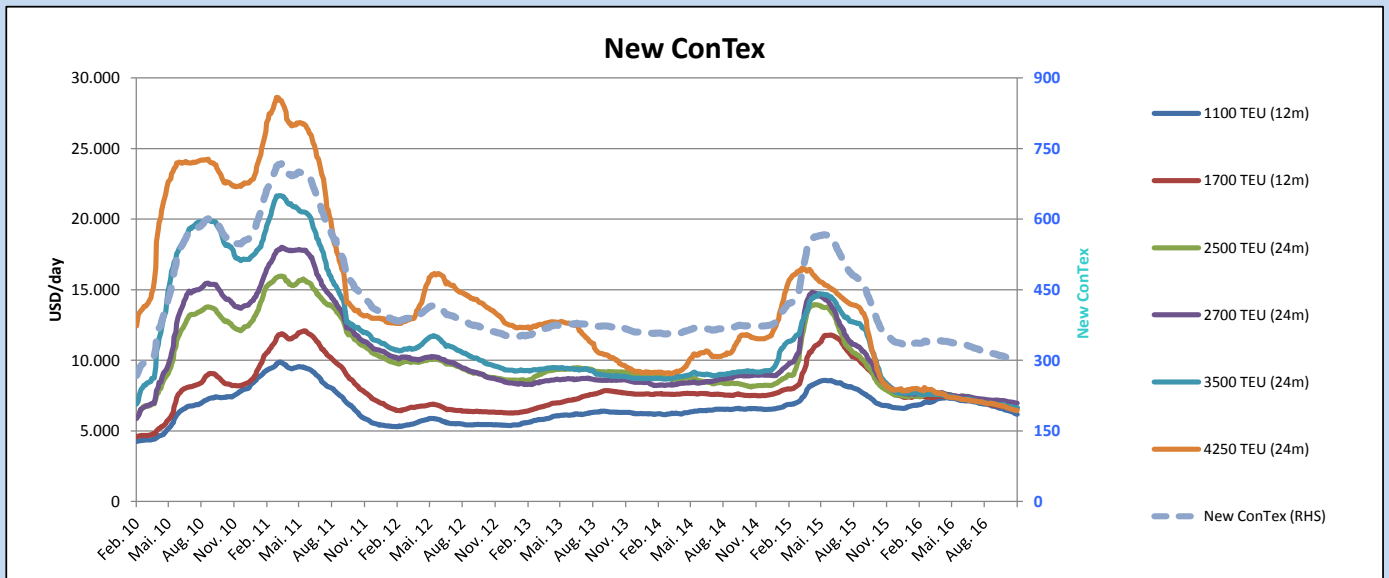
New ConTex*		298	
24.11.16		12 mos	24 mos
Gearing	1100 TEU	\$6.184	n.a.
	1700 TEU	\$6.580	
	2500 TEU	\$5.528	\$6.638
Gearless	2700 TEU	\$5.990	\$6.978
	3500 TEU	\$5.365	\$6.642
	4250 TEU	\$4.237	\$6.456

Legend		
↑	up	+ 2% or more
↗	steady up	from +1% to +1,9%
→	steady	+/- 1%
↘	steady down	from -1% to -1,9%
↓	down	- 2% or less

\*New ConTex evaluation is EXCLUDING  
2500/2700/3500/4250 TEU groups for  
12 months period

New ConTex-Commentary - issued:	24.11.16
<p>The depression on the containership market moves further with the New ConTex index continues its weakness by stepping sideways from 299 down to 298 Points. As usual these days the majority of fixtures reported being extensions, thus we are still lacking NEW requirements. Since the yearend is approaching it will be interesting to note if the start of the new alliances with new services and trades for 2017 will eventually have a positive influence on the demandside. Unfortunately the fact that so far this year more than 180 vessels with a total of roughly 650.000 TEU went for demolition has no impact on the charter market at all since the oversupply of tonnage still persists. On the Index, except for the 1100 TEU size which lost another 0,8 % compared to last week, all other segments remain at the same low charter level. The pressure on the rate is still volatile with enough spot vessels available more or less in all parts of the world regardless of the size.</p>	

		New ConTex Development									
Vessel type	Evaluated Period	Today	Week-on-Week		Month-on-Month			Year-on-Year			
		24.11.16	17.11.16	Change	Change	25.10.16	Change	Change	24.11.15	Change	Change
<b>New ConTex*</b>		<b>298</b>	299	-1	→ -0,3%	306	-8	-2,6%	357	-59	-16,5%
New ConTex	1100 TEU	\$6.184	\$6.234	-\$50	→ -0,8%	\$6.473	-\$289	-4,5%	\$6.798	-614	-9,0%
	1700 TEU	\$6.580	\$6.595	-\$15	→ -0,2%	\$6.692	-\$112	-1,7%	\$7.999	-1.419	-17,7%
	2500 TEU	\$6.638	\$6.653	-\$15	→ -0,2%	\$6.796	-\$158	-2,3%	\$7.953	-1.315	-16,5%
	2700 TEU	\$6.978	\$6.992	-\$14	→ -0,2%	\$7.098	-\$120	-1,7%	\$8.398	-1.420	-16,9%
	3500 TEU	\$6.642	\$6.640	\$2	→ 0,0%	\$6.769	-\$127	-1,9%	\$8.363	-1.721	-20,6%
	4250 TEU	\$6.456	\$6.469	-\$13	→ -0,2%	\$6.678	-\$222	-3,3%	\$8.269	-1.813	-21,9%
	2500 TEU	\$5.528	\$5.493	\$35	→ 0,6%	\$5.631	-\$103	-1,8%	\$6.587	-1.059	-16,1%
	2700 TEU	\$5.990	\$5.993	-\$3	→ -0,1%	\$6.085	-\$95	-1,6%	\$7.194	-1.204	-16,7%
	3500 TEU	\$5.365	\$5.312	\$53	→ 1,0%	\$5.429	-\$64	-1,2%	\$6.661	-1.296	-19,5%
	4250 TEU	\$4.237	\$4.253	-\$16	→ -0,4%	\$4.447	-\$210	-4,7%	\$6.200	-1.963	-31,7%



**Disclaimer**

The brand NewConTex is copyrighted by Vereinigung Hamburger Schiffsmakler und Schiffsagenten e. V. ("VHSS e.V.") and is protected by law. The NewConTex may be published only with the source reference © VHSS e.V. It is distributed to the general public for information purposes only and cannot be relied upon as a trading recommendation and does not constitute a solicitation to trade. The reported information is obtained from market sources. While every effort has been made to ensure the accuracy and the completeness of the NewConTex, VHSS e.V. makes no representations, conditions or warranties of any kind, express or implied, about the completeness, accuracy, reliability, or suitability of the NewConTex. Any reliance you place on the NewConTex is therefore strictly at your own risk. Neither VHSS e.V. nor any of its subsidiaries or affiliates nor any employee of the foregoing shall be liable or have any responsibility for any loss, liability or damage, cost or expense including without limitation, indirect or consequential loss or damage, or any loss or damage whatsoever arising from loss of data or profits arising out of, or in connection with, the use of and the reliance on the NewConTex, save for death or personal injury arising from VHSS e.V. negligence and fraudulent misrepresentation that cannot, under German law, be excluded.